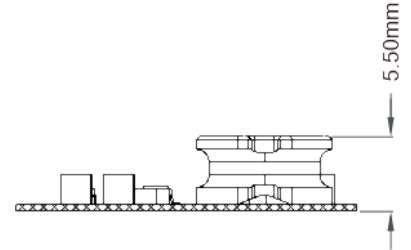
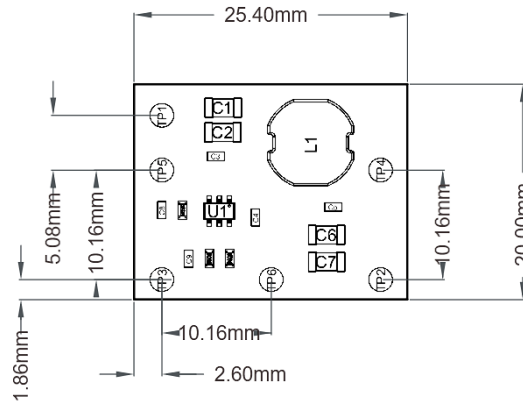
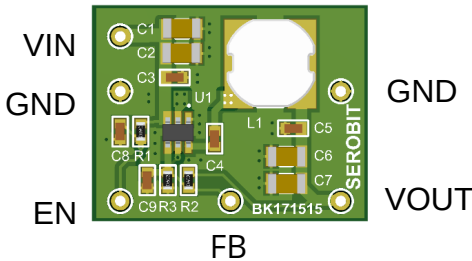


MADE IN INDIA

Technical Specifications

- Compact Size: 25.4 x 20 mm
- Input voltage: 5 to 15V DC(3.3V), 7 to 15V DC(5V)
- Output voltage: 3.3V / 5.0V (depending on the variant)
- Efficiency: >93% @ 7V Input | >91% @ 15V input @1.5A load
- High efficiency at light load condition. No Load Current: ~500uA
- Power output: 7.5W Max.
- Operating Frequency: ~600Khz
- Output short circuit and thermal shutdown protection inbuilt.
- Input Voltage Ripple: <200mV
- Output Voltage Ripple: <60mv
- Operating temperature range: -40 to 65 Deg C Ambient



*Height may vary slightly in different production lots

Advantage of DC DC Module

Compact & Tested Module: High-frequency DC-DC power supply design could be challenging. With the readily available modules, design engineers can focus on application development.

Enable Pin: DC-DC Module exposes Enable pin to control the output from an external circuit. It is internally pulled up by a 100k resistor. Pull down this pin using external Mosfet or BJT to shutdown.

Feedback Pin: DC-DC Module exposes Feedback Pin, this can be useful if you need current control in your application.

Efficiency Table

| 1.5A Load | | | | |
|---------------|---------------|----------------|----------------|------------|
| Input Voltage | Input Current | Output Voltage | Output Current | Efficiency |
| 15.00 | 0.544 | 5.000 | 1.50 | 91.8 |
| 14.00 | 0.581 | 5.008 | 1.50 | 92.4 |
| 13.00 | 0.623 | 5.000 | 1.50 | 92.6 |
| 12.00 | 0.671 | 5.000 | 1.50 | 93.1 |
| 11.00 | 0.729 | 4.993 | 1.50 | 93.4 |
| 9.98 | 0.798 | 4.985 | 1.50 | 93.9 |
| 8.97 | 0.883 | 4.977 | 1.50 | 94.3 |
| 7.96 | 0.989 | 4.966 | 1.50 | 94.6 |
| 6.90 | 1.127 | 4.952 | 1.50 | 95.5 |

Ordering Information

| | Input Voltage | Output Voltage | Max. Output Current | Max. Output Power |
|------------------|---------------|----------------|---------------------|-------------------|
| BK2520A33 | 5 - 15V | 3.3V | 2.28A | 7.5W |
| BK2520A50 | 7 - 15V | 5.0V | 1.50A | 7.5W |

NOTES:

- We can develop DC-DC Modules based on your custom requirements. Min. purchase volume for custom spec is 500 units.