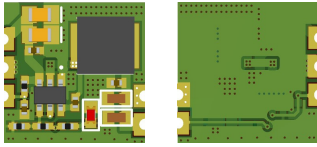
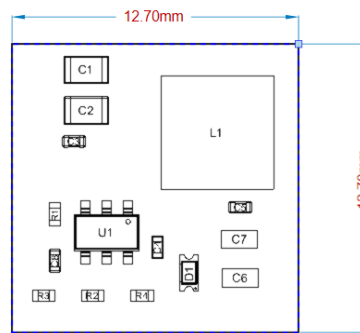
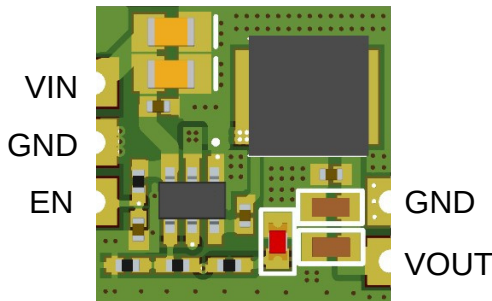


Technical Specifications



MADE IN INDIA

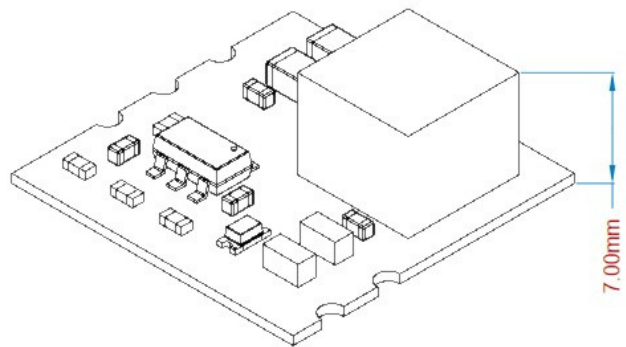
Compact Size: 12.7 x 12.7 mm
 Input voltage: 5 to 15V DC for 3.3V, 7 to 15V DC for 5.0V variant
 Output voltage: 3.3V / 5.0V (depending on the variant)
 Full Load Efficiency: upto 91%
 High efficiency at light load condition. No Load Current: ~500uA
 Power output: 5W Max.
 Operating Frequency: ~600Khz
 Output short circuit and thermal shutdown protection inbuilt.
 Input Voltage Ripple: <200mV
 Output Voltage Ripple: <60mv
 Operating temperature range: -40 to 65 Deg C Ambient



Advantage of DC DC Module

Compact & Tested Module: High-frequency DC-DC power supply design could be challenging. With the readily available modules, design engineers can focus on application development.

Enable Pin: DC-DC Module exposes Enable pin to control the output from an external circuit. It is internally pulled up and needs to be pulled low to shut it down.



Ordering Information

	Input Voltage	Output Voltage	Max. Output Current	Max. Output Power
BK1212-A-33	5 - 15V	3.3V	1.5A	5W
BK1212-A-50	7 - 15V	5.0V	1.0A	5W

NOTES:

- We can develop DC-DC Modules based on your custom requirements. Min. purchase volume for custom spec is 500 units.